

SC

SONNING COMMON MAGAZINE

IN THIS ISSUE



SOCIAL MEDIA MAKES AN IMPACT

Santa makes a return
to Sonning Common
P4



IT TAKES A VILLAGE...

In Focus
P18



OLIVIA JOINS THE EDGE

Welcome to our latest
Junior Editor
P24



.....

JOIN THE PROTEST AGAINST SON 6

1 MARCH 2017

.....

FEB / MAR 2017



sonningcommonmagazine

www.sonningcommonmagazine.org

CARPET FITTER

Fitted Carpets & Vinyl Specialist
Underlays & Fixings Supplied
Re-Adaptions & Restretches
Measuring, Estimating & Planning
Carpets ★ Vinyl ★ Ceramic Tiles
25 YEARS EXPERIENCE

MICHAEL HODGSON

TEL: 0118 901 1777 / MOB: 07841 586003

Caversham Aerial Services

TV Aerials Supplied and Fitted.
Poor Reception? Old aerials?
Can't get the new digital channels?

Give us a call - We can help!

Phone 0118 9673596

www.caversham-aerials.co.uk

Freeview

Freeview HD

wood lane dentistry



Vikram Chugani BDS MFDS RCSEd MSc
Jessica Lee BDS MFDS RCS
Claudia Wellmann BDS MFDS RCSEd MSc MRD
Dipesh Kothari BDS MFDS RCSEd

- Your local family friendly practice
- Routine general dentistry
- Affordable dental plans with Denplan
- Children seen on the NHS
- Tooth whitening
- Cosmetic dentistry and Implants
- Invisible braces
- Sedation for nervous patients
- Free parking

Now taking on new patients
Saturday and evening appointments available

Happy Healthy
Smiles...



Wood Lane Sonning Common Reading
Berkshire RG4 9SJ Telephone 0118 9722626
www.woodlanedentistry.co.uk

Thinking of moving?

For a free valuation or to enquire about
one of the properties in our varied portfolio
please contact Richard Beville or Sara Galbraith



Beville
ESTATE AGENCY

info@beville.co.uk
www.beville.co.uk
+44 (0)118 924 25 26
28 Peppard Road
Sonning Common
South Oxon RG4 9SU



elements
KITCHEN DESIGN

Visit our stunning showroom:
8b Portman Road, Reading RG30 1EA
Tel 0118 959 9919
www.elementskitchens.co.uk

SONNING COMMON PRE-SCHOOL

GROVE ROAD
SONNING COMMON
0118 972 4760

We are a happy friendly pre-school
welcoming children from 2 years
6 months, to come and learn through
play. We have a purpose built building
& extensive play garden.

Morning sessions are 9.00am - 12.00pm
Afternoon sessions are 12.00pm - 3.00pm



www.sonningcommonmagazine.org

FEB / MAR 2017

FROM THE EDITORIAL TEAM

The end of another year gives time for reflection. 2016 has been exceptional. Brexit, Trump and the tragedy of Syria have shaken the foundations and beliefs of many. Globalisation has become a slur, nationalism and authoritarianism are flourishing.

It certainly has made me focus on the things where we can make a difference. Many others are feeling the same and the focus on the village; exemplified in the return of Santa, an example of the power for good of social media; John Lambourne's annual Christmas lights and the money donated by local people; the event arranged for April publicised IN FOCUS begins the discussion about what makes a village. In that piece the African proverb appears 'it takes a village' (to raise a child) and my interpretation of this saying is that the community is of prime importance.

Pages of this magazine are full of the people who make a difference in our village through their significant contributions.

Volunteering is an important part of this dynamic and the magazine is one place where there is a need. Extra members would be very welcome.

While we all try to make sense of what will happen in 2017 the editorial team would wish one and all a happy and healthy new year. ●

Diana

Diana Pearman Editor

Email: editor@sonningcommonmagazine.org



HIGHLIGHTS

- 4-7 Community
- 10-11 Noticeboard
- 13 Interview with Vera Morris
- 16 'The village that never was' extract
- 17 100th visitor to SC Facebook page
- 18-19 What makes a village?
- 20-21 Jackie's craft column
- 23 Parish news
- 24-25 The Edge
- 27 Did you Know?
- 28 Tom Fort, Cook's corner
- 31 An amazing family
- 32-33 Church news
- 34 Diary dates/Advertisers' directory

Design & Artwork: Kevin Taplin
tensevennine.com
kevin@tensevennine.com
07887902376 / 0118 957 6929

Print: Rick Peedell
Xplor Ltd
rick@xplor-pm.co.uk
07766 254422 / 0118 9471955

Cover image: PROTEST AGAINST SON 6

While every effort is made to ensure the accuracy of information printed in this magazine, the editor and the publisher cannot accept any responsibility for the consequences of errors that occur.

SC SONNING COMMON
MAGAZINE

MEET THE TEAM ...



Christine Atkinson



Hannah Rice



Jo Stoves



Joan Grummant



Ros Varnes

USEFUL CONTACTS:

Chairman: Geoff Adams
1 Woodlands Road, Sonning Common RG4 9TD
chairman@sonningcommonmagazine.org
Tel 0118 972 2134

Diary dates: Helen Barker
helen.barker75@outlook.com Tel 0118 972 1241

Distribution: Helen Gavin
distribution@sonningcommonmagazine.org
Tel 0118 972 4680

Advertising: John Pearman
advertising@sonningcommonmagazine.org
Tel 0118 972 2381

DUE TO THE POWER OF SOCIAL MEDIA SANTA CLAUS MAKES A RETURN TO SONNING COMMON

In December, following on from a Facebook conversation about the village not having a Santa visit since Goring Lions disbanded, Helen Coyne volunteered to arrange something if she could have some assistance from villagers. Within minutes willing volunteers contacted Helen through the Sonning Common Gossip and SoCo Facebook pages offering to help.

"Within three days we had a group of volunteers, a tractor and driver courtesy of Paul Jenkins and John Lambourne, a music licence kindly arranged and funded by Craig Henderson and SODC had granted us a collections licence. Over the following two weeks we were able to pull together a good team and Sarah Mackenzie-Black had asked the Parish Council to donate £50 towards decorations." Santa and his trusty elf drove through the village on Tuesday 21 December. "The team of collectors were in great spirits and it is only with their help and willingness to walk 5.5 miles around the village on the cold night that it was possible to raise money for the two great causes." The Santa visit raised a fantastic £715.88 which has been divided between Sonning Common Primary School and the homeless charity Crisis. ●

by Helen Coyne



JOHN LAMBOURNE'S CHRISTMAS LIGHTS RAISE AN AMAZING £2,700 FOR GREAT ORMAND STREET CHILDREN'S HOSPITAL – WELL DONE JOHN ON BEHALF OF THE VILLAGE.

THE BEST ONE YET!

by Jo Stoves

After eight years, the Christmas Lunch in the Village Hall has quite definitely become one of the "traditions" of village life in Sonning Common.

Organiser Chrissie Phillips Tilbury said "I think this was one of the best years yet. We had lots of helpers which meant the food was served quickly, there were plenty of people to take round seconds and to refill glasses, and they had time to talk to our guests."

This year 50 guests sat down to enjoy the customary roast turkey, stuffing, pigs-in-blankets, roast potatoes, sprouts and carrots with gravy and cranberry sauce. This was followed by Christmas pud or trifle, coffee and home-made mince pies. There were crackers with paper hats and silly Christmas mottos, Christmas music and word puzzles to while away the time – and lots of chat between old friends and new acquaintances. It was a very warm and friendly atmosphere and at the end of the afternoon each guest went home with a gift of home-made marmalade and a gingerbread man.

A vote of thanks was proposed by Mr Brindley. He thanked Chrissie and Jill Vallis and their team of volunteers for all their efforts and John Pearman for transporting guests to and from the village hall in the FISH bus.

Chrissie's response was that the helpers didn't think of it as "giving up their Christmas Day"; it was great fun and a privilege to share Christmas lunch with the guests. ●



Photo: Peter Rickards

NOTTAKWIRE NEEDS MORE MEN!!

"As a result of generous patrons supporting Nottakwire's "Carols Event" in the village hall on 10 December, by entering the wine raffle, buying refreshments and contributing to the retiring collection, we have been able to send a donation of £500 to our Christmas Charity, "Embrace the Middle East". This is the third year we have supported this particular charity. The Carols Event was by free entry and we had a full audience, who joined 70 Nottakwire singers, to sing traditional carols and enjoy new seasonal pieces performed by the singers. In addition, our 16 strong Notts Group raised a further £140 from generous diners when they entertained at Badgemore Golf Club on 16 December. A further gift of £100 will be made to Club SC (the Youth Club) which we have also been supporting for a number of years.

Elaine and I wish to acknowledge the hard work done throughout 2016 by Nottakwire members, in order to achieve a high standard of performance and also to thank them for their friendly and convivial support of one another - and us - as friends and colleagues.

Also we want to thank the members of the Notts Group - for their commitment, their support for Nottakwire, and their contribution to fund raising efforts.

We have a number of regular helpers, who readily respond to our requests for stewarding and serving refreshments for events. To these friends, we also offer a heartfelt "Thank You."

Nottakwire is here for the community. If you are interested in finding out more about us, please contact: margaret.moola@btinternet.com OR telephone us on 0118 972 1248. Happy New Year to all Nottakwire's many friends. ●



Photo: Henley Standard

LITTLE SHOP OF HORRORS!

by Christine Atkinson

Another fabulously successful school production at Chiltern Edge was seen over three evenings during December.

A HUGE effort was made by everyone involved front and back of stage; cast, band, music, lighting, sound, set design, ticket sales and all the staff. The set was really amazing, the cast shone and everyone who came to see it enjoyed the show.

A special mention must go to the new Head of Performing Arts, Mr Harte, who started at the school in September, and has pulled off a very professional production. ●



SEASON'S GREETINGS

Season's Greetings was played to full houses in November as the Chiltern Players brought Alan Ayckbourn's classic piece to a festively decorated Peppard Hall.

"I saw a wonderful production of the play 'Season's Greetings' by the Chiltern Players. The cast easily managed to portray the cartoon comic like characters that reside in all of Ayckbourn's plays with ease, helped by some good direction in a setting where it must have been a real headache to block. (played in

the round). Apparently, it was one of the lead actors first time on stage, who it was I do not know such was the quality of the flawless inter-play between characters and the projection of the script. My good friend, Terry Sopp was his customary brilliant self in a role he makes look alarmingly easy. Everything was wonderful, the setting, the hospitality and the generous cups of tea!! Look forward to the next production with relish!!! ●



POET'S CORNER

Oh snow – such fun
throwing back the curtains
gasps of joy
the view deeply dusted
with opalescent shimmering white
momentary wonder
then -
squeals of delight and energised
excitement
boots gloves scarves toboggan
and off they go
swept along
like the drifts that pile
against the hedgerows.

by Rosemary Girdler

My Mother's Hands

I hold them
Soft and limp and knarled
With age, arthritis and history.

Her ring on my finger.
As I think now of her young hands
When he first gave her the ring -
An engagement pledge from my father

These hands so good at baking
and making cakes and chicken soup
At polishing silver and brass -
Still I smell the polishing wool
When I think of it
The apple pies, the Irish fry-ups
The remarkable array of meringues
and sandwiches for special teas

Two bands only now on her fingers
Her wedding ring and that
Which once belonged to a long-gone
relation
She says she's feeling cold now
I put her hands gently beneath the
blankets

by Rosemary Girdler

ZERO TOLERANCE ON CRIME



Thames Valley Police is adopting a 'zero-tolerance policy' towards issues with anti-social behaviour in the village centre.

In response to calls from residents reporting anti-social behaviour, officers have actively engaged with the young people they believe are responsible, some of whom come from Reading and the surrounding area and others who live in the village.

Since July 2016, in addition to dedicated patrols, officers have visited the homes of some of the young people concerned to speak with their parents and have served anti-social behaviour letters, notices and contracts. In partnership with the parish

council, CCTV-coverage of the village centre and Co-op car park has been improved. New lighting has been installed.

Neighbourhood Officer, PC Sue Bradshaw, said: "We understand from residents that some anti-social behaviour is, unfortunately, still having an impact on the community and Thames Valley Police is receiving further calls.

"We want the residents of Sonning Common to live in their homes without being disturbed, and to not feel intimidated by the actions and behaviour of a particular group who are known to our officers. We do appreciate that young people will always hang around shopping areas but anti-social behaviour will not be

tolerated, and the team at Henley will endeavour to resolve this for the long term.

"We ask that residents keep on reporting anti-social behaviour to us using 101, or 999 in a real emergency situation, as soon as they see or hear it. We can only respond to what we know about, and the intelligence we glean from crime reports allows us to build a fuller picture of the crime that impacts on the area."

Issues reported to police include excessive noise from people and vehicles; cars being driven in an anti-social manner along Wood Lane and Woodlands Road; rubbish; criminal damage; issues with fireworks; drugs; intimidation and abuse. ●

Hangings at Reading Prison!!

On Saturday 3 December, thanks to my working at the art exhibition which was being held there, Club SC had the unique chance to take 7 of our members for a tour of the Victorian Reading Prison which closed in 2013.

We had as our guide an extremely knowledgeable gentleman named Sandy who had worked at the prison while it was in use. We got to see many of the areas that were not open to the general public including the former Victorian and 20th century prison receptions, medical centre and Victorian kitchen as well as several of the cells while Sandy entertained the young people with stories about what life was like for both the

modern and Victorian prisoners. We were lucky enough to be taken to the area where some of the hangings took place and Sandy had the members enthralled with a very vivid description of a hanging which the members loved!

Many of the members of Club SC (as well as us adults) were both surprised and shocked to discover that children as young as 7 years old were locked up for some very minor 'offences' including scrumping. I think that the members were glad that times have changed!

One parent told me the following week that their child was telling them all about seeing the cell in which Oscar Pistorius was held (they meant Oscar Wilde of course!)

My thanks to FISH for the transport, which made my arranging this unique opportunity for Club SC possible. ●

Adam Negus
Youth Support Worker
Club SC



Friends of Sonning Common Library

Almost forty people attended the first AGM of the newly revived Friends of Sonning Common library (FoCSL) in the village hall on Monday 7 November. The meeting heard that the organisation now has more than 85 members paying an annual subscription of £10 and that more than £500 has been donated. FoCSL will use the money to pay for new books and other resources following the cuts to the Oxfordshire County Council central book fund and the loss of Sonning Common's individual book fund. A constitution was approved at the AGM and seven members of the committee were elected. The meeting also heard about the fantastic work of the volunteers who give their time to keep the library running smoothly. FoCSL membership forms can be found in the library; anyone interested in becoming a volunteer should speak to the librarian.

The committee would like to thank everyone in the village for their support and to remind you of a special story times in the library for Mother's Day. ●

CHILTERN EDGE NEWS

Duke of Edinburgh

Congratulations! to the following Year 10 students who are the first group in their year to complete their Bronze award during the Autumn term. There are 11 more in Year 10, and 18 in Year 11, working towards it.

Lucy Absolom, Isobel Barnett, Olivia Higson, Mia Muncer, Leah Tilley

Mr Nutt (Primary Sport Coordinator for the local schools) coordinates the course via the Eyot Centre in Henley. Both his daughters recently completed their Gold award and were presented with them by the Earl of Wessex at St James's Palace in London.

DigiGirlz

DigiGirlz, a Microsoft YouthSpark program, gives secondary school girls opportunities to learn about careers in technology, connect with Microsoft employees, and participate in hands-on computer and technology workshops.

A group of girls from Chiltern Edge took part in a special DigiGirlz day in November. The Microsoft employee who supported the day sent this message to

the school - and they were very proud to receive it.....

'I was so impressed with the group and thoroughly enjoyed my morning in their company, all the girls were an absolute credit to themselves and to your school.'

It was a very early start and the girls arrived with great enthusiasm and energy which they maintained throughout a very busy and packed morning.

They showed wonderful creativity and fantastic collaborative team work. All of them without fail were inclusive and so considerate of other ideas, they had a great sense of humour and all contributed to the challenging application development task, I even heard that they were in the top three for the day which is a fabulous achievement.

I really hope they enjoyed the day and will continue to explore all things computing and tech related as they clearly have an aptitude for working in this environment and I have no doubt they will all shine in whatever they go on to do.'

Chiltern Edge is one of only two schools who have been invited to take part in the scheme every year for the last seven. ●

OUR ECO TRIP

On Friday 2 December, 16 members of the Sonning Common Primary School's Eco-council and Energy Monitors visited Ardley Energy Recovery Facility centre in Bicester.

We were greeted at the entrance by the Visitor Centre Manager Sylvie and a life size dinosaur made from all kinds of materials, umbrellas, Barbie dolls, watering cans, parts from old washing machines and bike wheels, to name but a few of the items. We then went to the visitor centre where we learnt about the waste hierarchy. Reduce, Reuse, Repair, Recycle. We also learnt about what happens to the waste at Ardley.

It is burnt to produce electricity

Finally, we were all told to put on safety equipment as we were going to see the area where all of the bins were emptied into a concrete ditch where a large grabber on a crane picked up the rubbish. The rubbish is then mixed as some types of rubbish burns better than others. It is then picked up by the same grabber and dropped it into a hopper where it would eventually be taken to the furnace and generate electricity, by using the heat to produce steam to drive the turbines.

We all thought it was very educational and fascinating to learn what Ardley Energy Recycling Facility was doing to help the environment. We all had a great time and would like to visit again for Part 2...

by Hannah R & Charlotte L

Note from the Head teacher

If you are looking for a trip where the pupils will learn so much about recycling and 'being green', then this is certainly the trip to go on. The staff there are also simply brilliant. Thank you Ardley...

Chris Hirst



Update on the Co-op closure

The Co-op store is due to close for five weeks from 20 February to 24 March as part of the programme to extend and refit it.

During this period the Co-op will provide a pop-up shop in the car park behind the store - a van selling around 150 key product lines. Normally 3,000 product lines are stocked by the shop.

The building project will see the store being widened to the edge of its current boundary along Woodlands Road, thereby extending the shop floor area. The four parking spaces immediately behind the shop will become a storage compound while the access onto Woodlands Road will remain.

Pavements on Wood Lane and Woodlands Road will be closed during some of the work.

The Co-op is planning to distribute leaflets to residents in the neighbouring vicinity providing more information on the project.

Moore's Painting, Decorating & General Maintenance Services

Spruce up your Home & Garden!
5% Discount when you quote: SCMAG

*Interior/Exterior Painting, Glossing, Staining. *Wall Paper Removal/Hanging. *Damaged Walls/Woodwork Repair.
*Repair & Maintenance of Internal/External Fixtures & Fittings.
*Fences/Sheds Erection & Repair. *Fence, Shed, Decking – Cleaning, Staining, Painting. *Garden Clearance/Maintenance

We invite you to contact us for a free, no obligation quotation.

Call: 01189 722002 or 07595 906940
Email: info@moorepds.co.uk Web: www.moorepds.co.uk

Beacon Flooring
A Family Run Business

Carpet Wood Karndean Vinyl

Free fitting on carpet orders over £150

16 High Street, Goring. 01491 454095
beaconflooring@aol.co.uk
www.beaconflooring.co.uk

Robin James
OPTICIANS



- Comprehensive eye examinations
- Full contact lens service
- Free specs for children
- Extensive range of designer frames
- Main agent for Zeiss and Rodenstock lenses
- Free parking

0118 947 2099
www.robinjames.co.uk
44 Church St, Caversham, Reading (opposite Waitrose)

gp gunningplumbing.com
• plumbing • heating • gas •

**ALL DOMESTIC PLUMBING, HEATING, & GAS WORK
INSTALLATIONS, REPAIRS, & EMERGENCIES**

**CAVERSHAM BASED
GAS SAFE REGISTERED ENGINEER**
SERVING READING & THE SURROUNDING AREA

CALL ANDREW ON 07815 304 931
www.gunningplumbing.com



Studio One



Pilates Matwork | Group Reformer
BarreConcept | Ballet Barre | Yoga

Studio One, Hayden Farm, Nuffield,
info@studioone.uk.com, www.studioone.uk.com

PEPPARD
BUILDING SUPPLIES

FIRST CHOICE FOR THE PROFESSIONAL


FREE LOCAL DELIVERY

- Competitive Trade Pricing
- Bulk Bags
- Specialist Insulation Stockists
- Indian Sandstone
- Bricks/Blocks /Aggregates
- Trade Shop
- Plenty of Parking
- Web Offers!

Call **0118 972 2028** / Sat Nav **RG4 8XA**
Visit www.peppardbuildingsupplies.com

*Terms and Conditions apply

"We turn feelings into flowers"

Brambles 



42 Wood Lane • Sonning Common • RG4 9SL
0118 972 1240 0777 179 0916
www.brambles-sonning-common.co.uk

Kidbys Sheds
Simply The Best

28 Kennylands Road – Sonning Common – Reading

A Shed Should Be For Life

Sizes from 4ft x 3ft Up to 30ft x 20ft
Bespoke doors and window arrangements with building colour choices. Fully Insulated Home Offices

www.kidbys.co.uk

Contact Michael Loades or Peter Kay
Tel: **0118 972 3380**
Email: sales@kidbys.co.uk

25 YEARS davis tate

YOUR LOCAL WINNING TEAM

Local people, selling and letting local houses

 Julie Norman
 Melissa Edwards
 Joanne Parker
 Vanessa Townsend

Contact Davis Tate:
Email sonningc@davistate.com
or call 0118 972 4242

davistate.com [Zoopla](https://www.zoopla.co.uk) [rightmove](https://www.rightmove.co.uk) [PrimeLocation](https://www.primeLocation.co.uk)

Best Estate Agent in RG4

allAgents.co.uk

GOLD ESTATE AGENT of the year 2016

for CUSTOMER EXPERIENCE

If you have instructed another agent on a sole agency and/or sole selling rights basis, the terms of those instructions must be considered to avoid a possible liability to pay two commissions. However asking us to visit is FREE.

Red Kite Electrical 

Top quality electrical work for Sonning Common and the South Chilterns since 2006.
All sizes and types of work undertaken.

sparks@redkiteelectrical.co.uk
www.redkiteelectrical.co.uk
0118 907 1834
0788 273 7402
10 Onslow Gardens, Caversham



Time 4 Pilates 

**Want to look and feel great!!
Try Pilates – controlled, yet gentle exercise**

Classes in Sonning Common area
Including Ante and Post Natal

Mondays / Tuesdays / Thursdays
Beginners and Intermediates
Max 12 in Group (6 in Pregnancy classes)
Private sessions also available

Christine Brook – Member of Body Control Pilates® Association
Ring 07789 717017 or email chris@time4pilates.co.uk
Website at www.time4pilates.co.uk

VILLAGE BARBERS

0118 972 3930
24 PEPPARD ROAD
SONNING COMMON

**£1 OFF WITH THIS VOUCHER
CHILDREN'S PLAYROOM**

CUT - £13 ONE GRADE - £9 TWO GRADES - £11
CUT & BLOW DRY - £16 CHILDREN UNDER 10 - £9
CHILDREN 10 TO 16 - £12
SENIOR CITIZEN (MON-FRI) £9 CUT & BLOW DRY £12
Late night opening Thursday to 7.00 pm

Whist afternoons

Batten House, Lea Road
Every Tuesday afternoon - 1.45
Costs £2 includes a cup of tea/coffee and biscuit.
A very friendly group All are welcome
Come and give it a try
Lots of prizes for winners and losers!!
Come and join us on Tuesday 7 February 2017.



All are welcome to our monthly play readings at the Butcher's Arms. One of our members chooses a play and we meet in the conservatory with a drink. It's for fun and there's no obligation to perform, only to read plays.

Next readings are on Wednesday 8 February and Tuesday 7 March 8pm

SONNING COMMON ANNUAL VILLAGE QUIZ

FRIDAY 17 MARCH 2017
at
SONNING COMMON PRIMARY SCHOOL
GROVE ROAD, SONNING COMMON
Start time: 7.30 p.m.

Teams of up to 6 players
(limit of 20 teams)
Entry Fee - £4 per team member
All profits to the school PTA
Entries to Mel White
melanie444white@hotmail.co.uk
or Sonning Common Library
01189 722448
BAR AVAILABLE
PARKING PLENTIFUL

Henley and District Philatelic Society

February 8 Quiz evening and Annual Competitions
all classes may be entered - stamps, postal history, aero-philately, Thematic, Social or Open class and Postcards.

FEBRUARY 22
AUCTION VIEWING
for our very popular Open Auction

MARCH 8
OPEN AUCTION
come and join in the bidding or bid on line prior to the day.
Viewing from 6.30 p.m.

MARCH 22
DISPLAYS
Members of a Visiting Society will give several displays.
Details 01491 681739 or on our website: -
www.henleyphilatelic.org.uk

A New Year resolution to help your magazine?

JUST 6 MEETINGS PER YEAR

The magazine depends on all the volunteers who help get your copy through your letter box.
The committee needs someone to take minutes and prepare agendas for our meetings.
We would also like some new committee members especially anyone interested in building up our advertising base
• who would like to strengthen the management
• who has ideas for improvement of the magazine.
Help to enhance our online presence would also be welcome

Please contact Geoff Adams, the chairman on
0118 972 2134 or email sonningcommonmagazine.org.

SC SONNING COMMON MAGAZINE

IN THIS ISSUE



GREETINGS OF THE SEASON

Spring 2017 production will be Duets,

a comedy in four acts by Olivier and Tony Award nominated playwright, Peter Quilter.

Thursday 30, Friday 31 March,
and Saturday 1 April 8pm
Peppard Memorial Hall Peppard Common,
RG9 5JA.

Tickets available from 0118 972 2632
'Occasions' in Sonning Common or
chiltern.players@yahoo.co.uk



VILLAGE COFFEE MORNINGS

Sonning Common Village Hall

WEDNESDAY 1st February

10.30 - 12.00 noon

All Welcome Free Entry
Coffee/Tea & Biscuits (small donation appreciated)

COSTUME JEWELLERY
HAND CRAFTED GREETINGS CARDS
BOOKS * CRAFT ITEMS * FABRICS WOOLS
BARGAIN PRICES !!
TOMBOLA PRIZES !!

GREENSHOOTS selling PLANTS
PRODUCE, JAMS AND CHUTNEYS

Presentations to donate to Local Community Projects

Hosted by Sonning Common Women's Institute

Pinchas Zukerman performs Beethoven

Sunday 5 February 2017
7.30pm

The Hexagon, Reading
Director/Violin: Pinchas Zukerman
Beethoven Egmont Overture
Beethoven Violin Concerto
Elgar 'Enigma' Variations

Tickets £25.50, £22.50 Subscription discounts available

www.readingarts.com/thehexagon Box Office:
0118 960 6060

FUN and GAMES in the LIBRARY

Just a reminder of the following events which take place on a regular basis in the library:

1st and 3rd Mondays of the month (unless there's a Bank Holiday):

Rhymetimes for pre-schoolers and their parents/carers from 10am - 10.30am

Every Thursday from 10am until 12 noon:

Gadget drop-in session, for those with queries/problems with lap-tops, Macs, Androids and Smartphones. It's advisable to book as these sessions are becoming increasingly popular.

(Sessions may be arranged at other times if necessary - just ask)

Every Friday from 10am - 12 noon:

Scrabble Club meets. More players always welcome!

Every Saturday from 10am:

Storytimes for under-8s, with stories and colouring.

There will be a 'special' storytime on Saturday 25 March with crafts for Mothers' Day, and home-made cakes on sale

Health Walks

If you're still struggling to lose your Christmas weight, why not give the Health Walks a try?

It's good to wrap up warm and get out into the beautiful local countryside for a brisk walk.

The Health Walks timetable continues throughout the year with a programme of walks to suit all levels of fitness:

It's fun and it's free!

The timetable is available from the library, the Health Centre and the Herb Farm, or on the website at www.sonningcommonhealthwalks.co.uk/timetable.

If you'd like to talk to someone about the health walks, phone Colin Davies on (0118) 9722527

E. H. HAMLEY & SON

Builders & Decorators

Tel: (0118) 9573894
Mob: 0774 392 9649
Email: ehhamleyandson@gmail.com

Property repairs a speciality

14 Sheridan Avenue
Caversham, Reading RG4 7QD



T.C. FULLER PLUMBING & HEATING

• Installation • Maintenance • Service • Repair
Boiler replacement, heating system upgrade & adaptations, power flush.
Hot water cylinder replacement.
All plumbing work undertaken.
Bath/Shower rooms, water softeners-salt supplied.
• No call out charge • Free estimates • Fully insured

Tel: 0118 9724097
Mob: 07800 914 880



Shaun Guard TV AERIAL SERVICES

- **Poor Reception Solved**
Aerials repaired & supplied
- **TVs** - Hung on your wall and tuned
- **Extra TV Points** - For aerial and Sky (In HD!)
- **Sky TV** - Also Foreign Language TV

Call **Sonning Common**
01189 639113

OXFORD AERIALS

Fed up with limescale?
A Water Softener
would be your solution

Compass Water Softeners

SALT, SALES, SERVICE, INSTALLATION

0118 972 3773 0118 941 0869 0796 700 9838

www.compasswaterssofteners.co.uk

Email: martin@compasswaterssofteners.co.uk

Family Hairdressing
any age & any style

.....and all in the comfort of your own home.....

Ring Maureen on
0118 972 1074

Sonning Common Pet Care

At Home Pet Care
when you are on holiday or at work

Cats
Daily visits to clean, feed and pamper
Small Pets
Home visits to care for your Rabbits, Guinea Pigs, Hamsters, etc.
Dog Walking
Regular or occasional walks
Puppy Visits
To feed, play, toilet break and clean up



Please call Alison for further information
Tel 0118 9722948 / 07787 114536

DK Builders

Daren Kilroy



BRICKLAYING, EXTENSIONS,
GARDEN WALLS, PATIOS ETC



OVER 20 YEARS EXPERIENCE

CAVERSHAM, READING 07951736745
0118 3759407

BONNER LOCKSMITHS

INSURANCE APPROVED

DOORS & WINDOW LOCKS SUPPLIED & FITTED,
CHANGED OR UPGRADED (BS3621)

DOMESTIC & COMMERCIAL PREMISES
DIGITAL LOCKS • BARS

FREE NO OBLIGATION QUOTE

ALL AREAS COVERED

CALL OUT SERVICE

01491 680216



FULL MEMBER
OF BRITISH
LOCKSMITH
INSTITUTE

Beech Lane, RG8 0PX • Woodcote Nr. Reading
PROPRIETOR: S. J. BONNER

AN INTERVIEW WITH ...

VERA MORRIS SOME PARTICULAR EVIL

By BECKY GILROY

Author Vera Morris has recently had her crime novel *Some Particular Evil* published by Accent Press and spoke to Sonning Common Magazine, explaining how her time in the village has helped influenced her writing.

The story takes place in the late summer of 1970 at an isolated boarding school in Dulwich, surrounded by dramatic cliffs and turbulent seas. After the recent mysterious death of the headmaster's wife, newly appointed senior mistress and amateur sleuth Laurel Bowman joins forces with detective Frank Diamond to help catch the killer. With an array of intriguing characters, it soon becomes clear that they must race against time before the murderer strikes again.

Now living in Caversham, Vera was a former senior mistress at Chiltern Edge School. She began working in Sonning Common in 1970 and fell in love with the school and it's attitude towards learning. She says "It's always been a very happy school and very outward going, with lots of activities focused on sending the children out into the world, which was unusual at that time."

Vera used her experience in education as the foundation for her research; her detailed knowledge of school structures and of life in England in the 1970's allowed her to create a very realistic and believable landscape for her novel.

Vera has always enjoyed writing wherever she could and one day hoped to dedicate enough time to write fiction. Funnily enough, once retired Vera found herself returning to Chiltern Edge School but this time as a pupil to take a class in creative writing. She started writing short stories and realised that using a computer as a writing tool was very engaging, to see her words go directly onto the screen. Soon her short stories grew into bigger ideas.

Vera never expected to be a crime writer but does admit to enjoying the genre, inspired by writers like Henning Mankell, P.D James, and Ian Rankin: "I've always enjoyed reading crime and it's a good escape, it's an entertainment in a way and you try and solve the mystery as you're reading which appeals to me."

However, there were times when writing became difficult, particularly when dealing with dark and sometimes harrowing subject matter. Vera describes: "Some of the more gruesome parts were difficult to write, especially a chapter from the point of view of the murderer, it was difficult to get into their head."

Whilst her knowledge of the fictional school, Blackfriars, was inspired by her career, there was still plenty of research needed to bring the novel to life: "Some of this was research into my own life, I buy a lot of books about the period, about dress and architecture, anything that might help. I was a schoolgirl in Suffolk and I have a great feeling for the place, taking photographs and talking to local people."

However, Vera wants to make it very

clear that her fictional school and distinctive characters are precisely that, fiction. She says: "But really the school isn't like Chiltern Edge at all and neither are the people!"

And there's more exciting news for Vera as Accent Press will be publishing her second novel, and the next in the series, *The Right Temptation*. She says "I'm very pleased to be published, because it is very hard nowadays." And the excitement continues as there is a promise of third novel on the way.

Some Particular Evil is available on Amazon, via Accent Press, and in the Bell Bookshop in Henley. ●



**CURTAINS,
BLINDS, PELMETS,
TIE BACKS ETC.**

**ALL AT COMPETITIVE
PRICES**

**CALL CAROLINE ON
0118 954 2448
OR
0781 561 0007**

Kennylands Gymnastics
(formerly Thames Valley
Gymnastics Club) offer
a range of classes for
boys and girls of all
ages. Classes cater
for preschool, recreation,
freestyle gymnastics as well
as competitive gymnastics for those who
express the talent and desire. Parties are
also available on weekends and we even
provide an opportunity for adults who wish to
have a go themselves.

Contact us: Kennylands Gymnastics
Bird Wood Court, Sonning Common, Oxon, RG4 9RF
T: 0118 9724 401 / 07846 185 905
E: kennylandsgymnastics@hotmail.com

www.kennylandsgymnastics.com

**HEIGHTS
TREE CARE**

- All Aspects of Tree Work
- Hedge Cutting
- Private and Commercial

Laurence Williams
0118 9721003 07813 586 735
info@heightstreecare.co.uk
www.heightstreecare.co.uk

**City & Guilds
NPTC**

Fully Qualified Professionals
£10 Million Public Liability Insurance

**WE UNDERTAKE ALL TYPES
OF BUILDING WORK**

- BUILDING EXTENSIONS
- BUILDING RENOVATION
- BUILDING ALTERATION
- GAS AND CENTRAL HEATING
- LOFT CONVERSIONS
- PLUMBING
- BOILER INSTALLATION
- SERVICE AND REPAIR

**BOILER SERVICE, REPAIR
& INSTALLATIONS**

AMAXS
PLUMBING HEATING ELECTRICAL
WWW.AMAXS.CO.UK
www.facebook.com/AMAXS

**Tel: 01189 724 794 Mob: 0784 068 1057
E: info@amaxs.co.uk**

SPRUCE MAINTENANCE SERVICE

For all your property maintenance requirements:

- ♦Decorating - inside and out
- ♦Paper Hanging
- ♦Carpentry - including door easing & hanging
- ♦Wall & Floor Tiling & Silicone Renewal
- ♦Plumbing - leaking taps etc.
- ♦Patio's, Landscaping & Garden Design
- ♦Hedge Cutting & Planting

Pass on your TO DO list

ROB SMITH Tel: 0118 972 4560

Graham Blake
soft furnishing

- Loose Covers
- Curtains
- Re-upholstery
- Carpets
- Conservatory Blinds
- Quilted Bedspreads
- Tracks & Poles
- Plantation Shutters

TEN YEAR GUARANTEE
For personal, helpful service, please telephone
01844 261 769
07802 213 381
www.grahamblake.com
Established Family Business

BRIDGES
Independent Estate Agents

*We are experiencing a high demand
for property in Sonning Common
and surrounding villages*

*Having achieved great success within the area in
2016, Bridges continue to register high volumes of
buyers looking to purchase in Sonning Common
and villages north of The Thames. We are well
versed in all that the village has to offer, specifically
with regard to the extensive and excellent
amenities, highly regarded schooling, and the
surrounding picturesque countryside.*

*If you're considering selling in 2017
contact Bridges, the Estate Agent
people are recommending*

BRIDGES
Independent Estate Agents

SOLD

0118 946 2121
www.bridgesproperty.co.uk

SOLD

SOLD

SOLD

SOLD

1 Church Road Caversham Reading RG4 7AA
Email post@bridgesproperty.co.uk

www.bridgesproperty.co.uk
0118 946 2121

THE IMPACT OF WW2 ON SONNING COMMON

Children were evacuated here from London and Essex. Some were boarded at Kennylands school and the Americans set up a camp on Kingwood Common.

Apart from sharing in the general impact on the country as a whole, a main effect of the second war on Sonning Common was the evacuation scheme, when residents were visited by a business-like woman who surveyed the circumstances and announced briskly something like, 'two for you and they'll be here on Monday.' Sometimes it was even brisker than that, as with the local lady who was out when the officer called and arrived home to find two boys with labels on their coats sitting on the doorstep. 'We're going to live with you', they announced as they stood up for her to open the door. Some of the London youngsters stayed on after the war and some remain in the village today.

A further wartime influence was at Kennylands and Bishopswood camps, which had been set up by the National Camps Corporation before the war and were taken over by the Beal School from Ilford and the Royal Alexandra Orphanage from Stepney, respectively.

After the war, Kennylands was retained by the Essex Education Authority, who set up the present school. It provides boarding education for some 300 children from Essex under a scheme by which the cost is shared between parents and the authority – a feature which makes it pretty well unique.

Bishopswood Camp was also run as a residential school during the war. As with Kennylands, the school reached a

high standard as folk who attended its concerts and plays will remember. After the war it housed other groups for short periods, including Egyptian victims of the Suez campaign in 1957.

Another particular effect of the war on Sonning Common and district was the American camp on Kingwood Common. At first, little was seen of the US forces, apart from the occasional G.I.

In those days of tight rationing, the Americans were very generous in helping people in the locality. One less desirable feature was the girls from Reading who set up tents near the camp to meet a special need and attracted long queues of G.I.'s until

the Commandant intervened and called a halt.

One lucky little girl was adopted by the Americans and on her birthday was given a huge doll (when it was almost impossible to get any this side of the Atlantic) and entertained to tea, including the biggest birthday cake she had ever seen. In addition enough money was left to provide her with a good education. Then there was the baker, a cheery, kind-hearted man who, after consultation with his wife, adopted five British children orphaned by the war and sent them over to her before the U.S. forces moved out on D Day 2. ●

Ralph Peedell



When Royalty Visited Sonning Common

King George VI and Queen Elizabeth at Kennylands Camp in September, 1940. Receiving them are the Camp Manager, Captain Mee, and Mrs Mee.



CHARLOTTE WAS THE 100TH VISITOR TO THE MAGAZINE FACEBOOK PAGE

By COLLEEN PAVIOUR

Charlotte lives in Baskerville Road. She is married to Richard and the couple have two children, Mary, 6, and Oliver, 4. The Esaus have lived in the village for seven years.

Originally you are from Bicester and your husband is from Ham. How did you come to live in Sonning Common?

We needed somewhere reasonably accessible to Heathrow because Richard is a pilot. We loved the area so we explored it first on our mountain bikes.

We looked at houses in lots of picture perfect villages, but Sonning Common had such a village feel. We could foresee our lives over the next few years and realised how attractive it would be to have all the amenities on our doorstep. It wasn't just a pretty-to-drive-through road.

By coincidence I had always loved the chef Antony Worrall Thompson. Years ago I had a newspaper cut-out of The Greyhound pub on my wall. When we moved here I realised it was one of our closest pubs and when we got married we had our wedding reception there and AWT cooked the meal and came out and mingled with our family.

What is your favourite bike ride or walk in the area?

If we're without the children we like to cycle out through the woods to Ipsden.

We have a drink in the pub then go back through Stoke Row and make a big circle, going through Nettlebed and back home. It's beautiful.

Our favourite walk is to start in the village and walk up to Spring Wood. There's a big oak tree on the path between the woods and the church where we got married, All Saints in Rotherfield Peppard.

Before we had children we used to sit under the tree and look out at the nice view. Sometimes on our anniversary we take a picnic there. The walk continues through the golf course, then back up to the woods where you pick up a lane then through a field and you end up at the Bird in Hand.

If the children are with us we like to cycle and walk through Old Copse.

What do you admire about your home and your street (Baskerville Road)?

Our house was built in the 1870s and is probably one of the oldest in the village. We have wondered if originally it was some type of small holding as back then there would have been just a handful of houses along our street.

We love the eclectic mix of housing down our street, Victorian, Edwardian, 1930s and onwards.

In your opinion, what is the village's best amenity?

We go to the Co-op every day, but it's

really handy to have a swimming pool (for small children), the library, the doctors, the dentist, a skate park – we use them all. The village is very well catered for.

Recently I needed some blue cotton, and I thought I've got to go all the way into Reading, but then I remembered Occasions. They carry lots of things you wouldn't expect a village shop to have.

Do you know any trivia about Sonning Common that other villagers may not know?

I used to be active in the Green Gym when I lived in Bicester. I think I read that Sonning Common started the very first, or one of the first, Green Gyms.

What did you do in a past life?

I was an in-flight beauty therapist for Virgin Airlines in upper class.

Did you have celebrity clients?

Tom Jones, Jonathan Ross, John Malkovich, Simon Le Bon, Henry Winkler (The Fonz) and Jamie Cullum.

Did you ever meet Richard Branson?

I had dinner with Richard Branson and his family when I worked for four months at his resort in Morocco, Kasbah Tamadot. He was there with his wife and mum and one evening he invited me to have dinner with them. ●



It takes a village...



By COLLEEN PAVIOUR



Sonning Common Magazine is thrilled to announce it will host its first-ever cultural event on Thursday, 27 April at the village hall.

As our village continues to grow and evolve and as we put last year's shifts in world politics into perspective, we feel the time is ripe to host such an event in the heart of Sonning Common. The talk will feature a local author, a village expert you might say to help guide the conversation.

Last September between the jolt of Brexit and the confounding US presidential election Sonning Common held its own important referendum.

Villagers voted overwhelmingly (94%) in favour of adhering to the Neighbourhood Plan, a smart guideline for future development in Sonning Common, which was painstakingly composed by a dedicated team of parishioners.

Amid global tumult and unease we found ourselves concentrating our efforts inwards. There was a noticeable extra pull of togetherness amongst parents volunteering for the school events following the Brexit result.

Then in December we witnessed a group of villagers come together to organise a charity event to bring a much-loved tradition, Santa on a tractor, back to Sonning Common. They pooled resources on social media

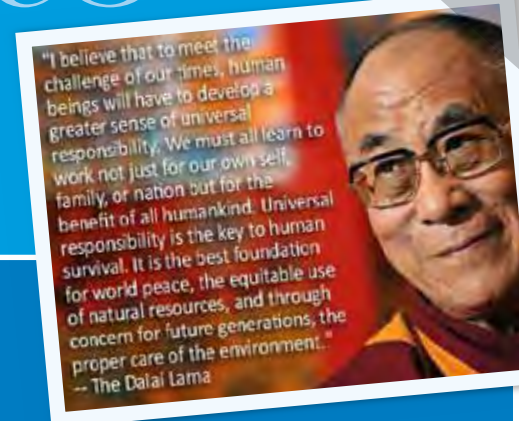
and in 24 hours coordinated the festive ride through the village, which went on to raise more than £700 in villager donations in one night.

So as that shocker of a year drew to a close, Sonning Commoners concentrated their efforts inwards, created something magical for the younger generation, raised funds for charity and made friends in the process.

This is just a small snapshot of village activity but these were remarkably uplifting and inspiring events for those who supported and took part in them.

If 2016 taught us anything it taught us it does indeed take a village (to raise a child according to an African Proverb).

What makes a village?



"Fundamentally, [Republicans] reject what it takes to build an inclusive economy. It takes an inclusive society. What I once called 'a village' that has a place for everyone."
(Hillary Clinton)



By hosting our evening of culture in the spring Sonning Common Magazine wants to build on this notion, it takes a village.

We want to bring readers together and present the beauties, drawbacks and quirks of living in a globally connected world but in the framework of our South Oxfordshire safe haven.

We know it takes a village but in 2017 what makes a village? A mini supermarket? An Ofsted-rated primary? Conveniences like a doctor's surgery, post office, library, children's swimming pool - with bonus points for a youth club, a skate park, great pubs, plus a herb farm?

Do we have it made or are we missing a

picturesque high street, a pretty church, a manicured green and a grumpy celebrity residing in the fringes?

Now we must all prepare for Brexit Britain and a new 'special relationship' with Trump's brand of America. If there's a neighbourhood-scale antidote to polarising leanings towards populism it must be to become a mini bastion of creativity and openness. How better to heal a divided nation than by slowing down the pace of life, embracing diversity on street level and focusing on the importance of social capital - village by village.

Alternatively, we can batten down the hatches, cling to our iPhones and ideals and try to keep up with incessant breaking news.

At Sonning Common Magazine we're betting the same energetic contingent that revived Santa on a Tractor will be up for discussing the possibilities of partly disengaging digitally to plug more into the quality of our community.

If this inaugural event is successful we will look at hosting similar evenings in the future.

Tickets will be very affordable and will include a glass of wine. They will go on sale in the weeks preceding the event.

We hope you join us in April to raise a glass, and a new conversation in the 'Village That Never Was.' ●

JACKIE'S CRAFT COLUMN

MOTHER'S DAY CRAFT

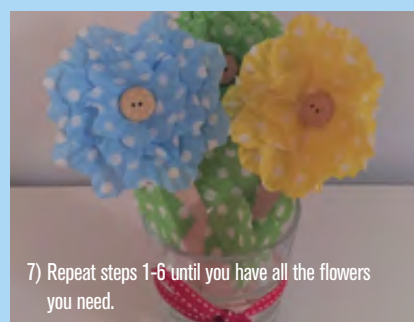
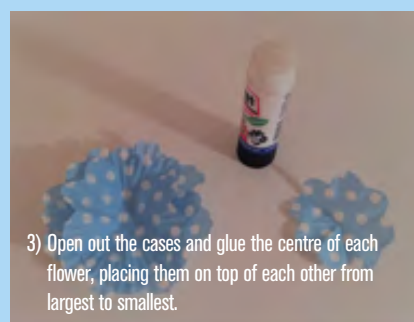
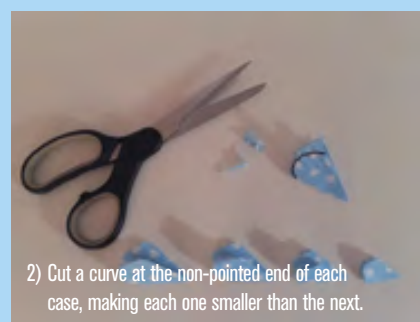
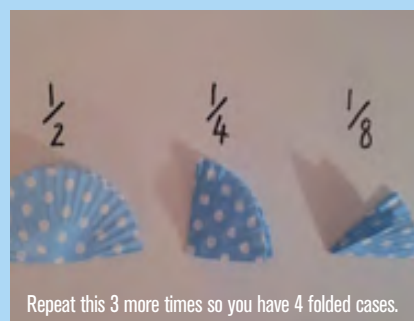
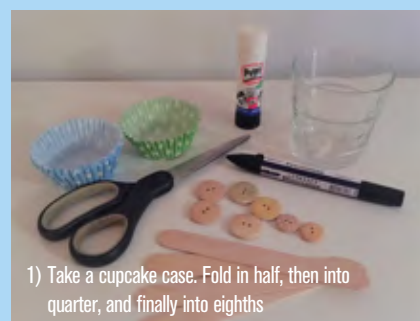
SURPRISE YOUR MUM WITH A THOUGHTFUL HANDMADE GIFT THIS MOTHER'S DAY, SUNDAY 26 MARCH. THESE PAPER FLOWERS ARE SIMPLE TO MAKE AND EASY TO LOOK AFTER – NO WATER NECESSARY!

Cupcake Case Promise Flowers

What you'll need:

- Patterned cupcake cases
- Lollipop sticks
- Buttons
- Glue
- Scissors
- Marker pen
- Small glass or jar

Top Tip – if you don't have lollipop sticks, use straws and write your promises on the leaves.



Grace aged 4 made this reindeer card using Jackie's craft idea



CAN YOU HELP?

Do you have a spare copy of Sonning Common Primary School 1913 to 2013 by Mel White?

As an ex pupil of Sonning Common Primary and resident for many years of Shiplake Bottom as a child, you can I'm sure understand why I would be interested in the above book.

Therein lies the problem. Despite contacting the school direct, searching on line I have thus far drawn a blank. I write to you now in the hope that, by way of a small notice in your magazine, I can locate a second hand copy from one of your readers. I of course would pay handsomely to anyone wishing to part with a copy.

I'm now living in Bournemouth, but still consider my home Sonning Common and as years pass, history and memories become increasingly important to me.

I hope that you can offer suggestion or indeed place a request in your next publication. I of course would be happy to pay any costs in this regard.

Thank you in advance

Best wishes
Mark Hurst

If you can help please contact the
editor@sonningcommonmagazine.org
or on 972 2381



Property Maintenance

Plumbing, Electrics, Decorating,
Woodwork, Roofing, Brickwork, Drains,
Kitchens and Bathrooms
All Exterior, Groundworks and Garden work
Property Management & Lettings
Please call Roger on 07752 759908
colbeckproperty@gmail.com

Computer repairs

Specialist in home-user & small business support:
Virus removal, slow computer, data backup,
data recovery, booting problems, hardware diagnosis
Over 10 years experience

0759 898 3292 jason@millwardit.co.uk

millwardit.co.uk

Parish news

The content of this page is the sole responsibility of, and is paid for by, Sonning Common Parish Council

WORKING TOGETHER TO PROTECT OUR NEIGHBOURHOOD PLAN

The parish council is working hard to overcome serious challenges to Sonning Common's Neighbourhood Plan ever since an overwhelming number of residents – 94 per cent of 48 per cent of the total electorate – voted for the Plan to be adopted last September.

Almost immediately developer Gallagher Estates applied to build 95 homes on land off the Kennylands Road. Part of the site, known as SON 6, is approved for no more than 26 homes under our Neighbourhood Plan.

Soon afterwards developer TA Fisher submitted an application to build 30 homes on nearby SON 5, instead of the 22 homes approved under the Plan. The proposed development's housing mix and lay-out are also of concern to residents, the parish council and Neighbourhood Plan Working Party (NPWP).

Since these assaults on our adopted Plan, the parish council and NPWP have sought to convince South Oxfordshire District Council (SODC) to uphold residents' wishes by ensuring that new development takes place under the terms of our Plan.

We have been lobbying our MP John Howell, our district councillors Paul Harrison and Will Hall as well as leaders and planning officers at SODC.

Before Christmas our cause was boosted significantly by a welcome announcement from Gavin Barwell, the Government Minister for Housing and Planning, providing clear direction on neighbourhood planning.

In his statement to the House of Commons, Mr Barwell said: "Neighbourhood planning was introduced by the Localism Act 2011, and is an important part of the Government's manifesto commitment to let local people have more say on local planning.

"With over 230 neighbourhood plans in force and many more in preparation, they are already a well-established part of the English planning system. Recent analysis suggests that giving people more control over development in their area is helping to boost housing supply.

"The Government confirm that where a planning application conflicts with a neighbourhood plan that has been brought into force, planning permission should not normally be granted.

"However, communities who have been proactive and worked hard to bring forward neighbourhood plans are often frustrated that their plan is being undermined because their local planning authority cannot demonstrate a five-year land supply of deliverable housing sites."

(Editor: This means that if a local planning authority does not have a five-year supply of land upon which to build new houses - as is the case with SODC - then national planning policy takes precedence over local planning policies because local policies are deemed to be out-of-date. In certain circumstances the national planning policy framework recommends that sustainable development should be approved except where such development would cause serious harm to the locality).

Importantly, the minister went on to state that Neighbourhood Plans that were less than two-years- old should not be deemed be out-of-date providing the local planning authority could demonstrate a three-year supply of land for new housing - SODC can.

He concluded: "It is right to take action now to protect communities who have worked hard to produce their neighbourhood plan and find the housing supply policies are deemed to be out-of-date through no fault of their own."

The debate continues, on how planning authorities should interpret planning policy. It is clear that, we will have to keep up pressure on our local politicians and SODC's planning department to ensure that our Neighbourhood Plan is respected and upheld.

We urge residents to continue to support the parish council in protecting our Plan and our village against unwelcome and unsuitable new development. This can be done by residents writing, in large numbers, to SODC to demand that unsuitable planning applications, contrary to our Neighbourhood Plan, are either rejected outright or modified to comply with our Plan.

The parish council wishes to thank the 166 residents who commented to SODC on the Gallagher Estates proposal for SON 6 and to the many residents who wrote to SODC in relation to the TA Fisher proposal for SON 5.

Together we will be heard! ●



Set in an idyllic village location, our small, friendly pre-school creates a very special environment for children guided by a team of highly qualified, caring staff. Please contact us for details: registrar@keps.co.uk



With excellent links to Kidmore End Primary School and only 5 minutes from Caversham, Sonning Common, Peppard and Emmer Green.



Kidmore End Pre-School, Parish Room
Wood Lane, Kidmore End, Reading RG4 9BB
Registered Charity Number: 104 6030
www.KidmoreEndPreschool.co.uk

Advertise in the sonningcommon magazine

Delivered to 1,850 addresses

Prices from just £27 per issue for an advert this size

Perfect for local businesses and tradesmen

Call John Pearman to find out more on 0118 972 2381 or email advertising@sonningcommonmagazine.org

Whatever you want to store...

...for whatever reason - house sale and purchase not coinciding, travelling, house building work, paperwork overload or just "de-cluttering" to sell your house more quickly - we offer a friendly and flexible service at Shiplake.

With competitive rates, secure storage all on one level and hassle free 24/7 access, contact us now!

Only 10 minutes drive from Sonning Common in Shiplake



01189 404163
www.barn-store.co.uk

PET COUNTRY SUPPLIES

We have been trading in the village for over 50 years

WE ARE PROUD SPONSORS OF
• THE LOCAL FISH BUS
• DOGS FOR THE DISABLED
• BINFIELD HEATH DOG SHOW

We have old fashioned friendly Service

We can't stock everything but we can get most things for your pet!

We deliver free on orders over £25.00

COME AND SEE US !!

43a Wood Lane

Sonning Common RG4 9SJ

0118 9723495

Email interestedin@petcountrysupplies.co.uk
www.petcountrysupplies.co.uk

Open.....Mon to Sat 9.am to 5.30pm (5pm Sat)
9am to 4pm Weds
Closed all day Sunday and Bank Hols

SAVE MONEY WITH



CHECK OUT THE MONTHLY OFFERS AT OUR SHOP OR WEBSITE

Sonning Common Parish Council
Parish Office, Village Hall, Wood Lane, Sonning Common RG4 9SL
T: 0118 972 3616

E: clerk@sonningcommonparishcouncil.org.uk (Philip Collings)
deputyclerk@sonningcommonparishcouncil.org.uk (Ros Varnes)
W: www.sonningcommonparishcouncil.org.uk

The Edge

HIYA! 😊

This is Olivia here, your new junior editor! I'm so excited to be writing for the magazine and being able to hopefully entertain all of you!! So, just so you know a little bit about me, I love cats (I have one of my own called Tom, you'll probably get to see some pictures of him quite soon), I like to act and dance, I'm vegetarian and I love social media so I'll probably be talking about that as well!

Now you know a little more about me, let's talk about a recent event... The New Year! It's that time again; of new beginnings and of course New Year's resolutions. I am going to be honest, I set the same resolutions every year then inevitably by the end of January they are long forgotten, this year, I have decided to set more realistic tasks I would like to do, instead of "resolutions" and I thought I would share them with you guys to maybe give you some inspiration. ●

And, since Easter isn't too long away

A Q S C N K G T L N O J T F G
C D A F F O D I L S D Z M L D
O L H C E D N I U P K E U O M
C U H B U G C A R R O T S W R
S B C A O O G X T I I A F E T
R U B S L N E C H N M L R R B
N N P K O M N O G G N O P S A
O N C E I W A E H Q H C A U Z
L C W Z L S Z B S B S H A S G

Flowers

Chocolate

Carrots

Bunny

Basket

Hunt

Daffodils

Spring

Egg



These are just a few ideas, I hope it may have given some of you some inspiration to try a new challenge instead of boring resolutions that you're not going to stick to. And bring on 2017!!

1. Wake up early and see the sunrise.
 2. Grow and take care of a plant.
 3. Read a new book every month.
 4. Have a massive clear out of my room.
 5. Go outside one night and stargaze.
 6. Meet or see a famous person.
 7. Stay up all night with a friend.
 8. Try a 30 day challenge.
 9. Try a one week phone detox.
- (Don't think I will accomplish this one ha ha!)*



GETTING TO GRIPS WITH THE URBAN DICTIONARY

By LEAH TILLEY

The urban dictionary, as you may have heard, is an online dictionary filled with made-up words created mostly by youths who wish to spread their new, trendy language among others.

Throughout my time in secondary school I've heard of quite a few words being used that I never knew existed or perhaps were being used in completely the wrong context. So, to find out what my school mates were talking about, I would either ask a friend or look it up in the urban dictionary (for, rest assured, any unknown word used by a teenager is bound to be in there!).

An example of these slang words is the phrase, 'allow it'. In reality this term means to authorise, or let something happen. However, in the urban dictionary it means to leave something alone, or stop doing it - quite the opposite of its real definition, funnily enough.

When writing this article I realised I wanted a definition of what the urban dictionary is, so I decided to look it up. (I know how that sounds by the way: I am defining a definer, looking up the term 'urban dictionary' in the urban dictionary, which is quite ironic really).

So, this is what it came up with. The urban dictionary is: "a place formerly used to find out about slang, and now a place that teens with no life use a burn book to whine about celebrities, their friends etc., and to babble about things they know nothing about."

I honestly found this definition quite amusing, the fact that users are dissing (disrespecting) the very website they are using. But I suppose it's their honest opinion.

Another definition is: "a site where users attempt to mock and explain everyone and everything in life, under the guise of cynical quasi-intellectualism. It should be both noted and ignored, embraced and dismissed, laughed at and revered."

Usually, I get fairly good definitions for the words I look up. However, every now and then I find a rather disturbing definition using quite a few swear words or containing unnecessarily inappropriate examples within it. This gets me wondering how well censored this online dictionary really is. The answer is not very well, if at all.

It is really quite scary to know that children of

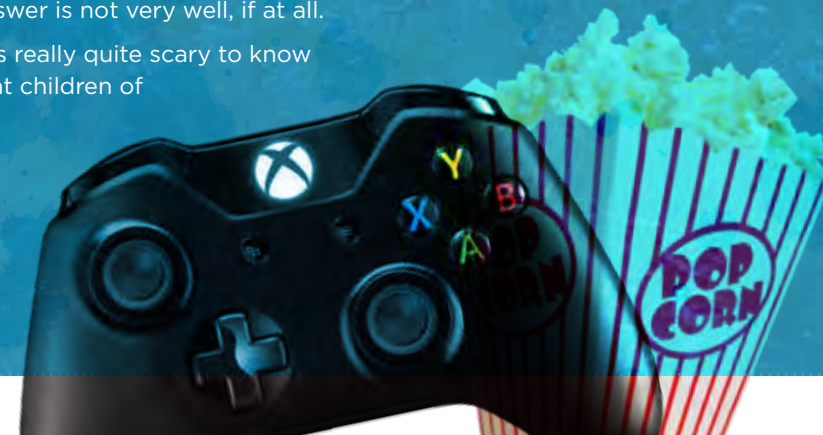
almost any age can simply click on the website and access bad language, and inappropriate descriptions from ignorant youths who care for nothing but setting their own viral word trends.

However, this is quite an unfair stereotype of the urban dictionary and its many users. For most of them it is just a place to express their opinions through newly-formed words and phrases which distinguish the individuality of the teen age.

Overall, I believe that although the urban dictionary can help with getting up-to-date with new language developed by youths, it is badly censored and includes unsuitable, improper language and explanations which badly influence impressionable minds.

Or you could say, "allow that its bare deep innit bruv".

(If you're having trouble understanding this last sentence you may refer to the urban dictionary). ●



MIKE DOCKREE WINDOWS

We provide and fit

- Windows
- Doors
- Conservatories

In a colour of your choice and also

- replace misty and damaged glass
- hinges, handles and locks

We can also give your conservatory roof an upgrade both in material and colour.

We also provide and fit:

- Fascia
- Soffits
- Guttering
- Cladding



Our windows and conservatories come with a comprehensive 10 year guarantee, full independent inspection with all certificates
Mike Dockree has over 30 years' experience

For your free quotation

Ring: 01189724376
or 07785928190

Email: mad@windows2002.fsnet.co.uk

10% discount on windows & doors
when you quote MAD2017

Help For Separated Families Family Mediation

divorce/finance/children/property
Seek Professional Help – FMCA accredited
www.csmfamilymediation.co.uk 07591 085389



01491 845575
keith.jefferies@jcslimited.co.uk

An Accountant That Will Save You Time & Paper Work

Excellent customer service & free initial consultation

- Self-Assessments
- Corporation Tax Returns
- Business Advice
- Accounts



WEE-COT SEATING

Upholstery, Loose Covers,
Replacement Cushions, Chair Caning,
French Polishing & Furniture Repairs
LIZANNE SMITH Tel: 0118 972 4560

Paul's Painting and Decorating.
Plastering. Carpentry.
Property and Garden Maintenance.

07583 623040 or 0118 9473735
Friendly, Local, 30+ Years Experience, Free Quotes

DID YOU KNOW?

GO ACTIVE HAPPY NEW YEAR!

Why not choose small lifestyle changes in 2017 that can make a big difference to your long term health and fitness? One way of doing this is to aim for 150 minutes of moderate intensity physical activity each week by the end of this year. Enough to get you out of breath and a bit sweaty - just 30 minutes, 5 days per week! See the free activities below to help you get GO Active - activities for all ages:

- Walking Football in Henley on Thames
- The Green Gym - practical nature conservation with the aim of keeping fit and healthy
- Explore your local area and visit The Chilterns Area of Outstanding Natural Beauty for walking and cycling routes.



GO ACTIVE GOLD TASTER EVENTS - FOR THOSE OVER 60

Find out what GO Active Gold could offer at a free taster session:

Rotherfield Peppard Sport Pavilion
Thursday 2 February, 10 am - 12 pm

The session includes a presentation from GO Active Gold staff, two taster activities, functional fitness MOT appointments and refreshments.

To sign up or for more information, please call 01235 422219 or email participation@southandvale.gov.uk.

Buggy-a-cise - for those with young children

There's no need to worry about childcare in this class - your child and the buggy are part of the workout!



Henley Leisure Centre
Thursday 26 January 9.45 am - 10.45 am
FREE taster session for anyone new trying out the class

Contact Emma Freeman 07801 203550
Emma.Freeman@southandvale.gov.uk

TECHNOLOGY USED TO STEAL FROM PARKED VEHICLES

Drivers using motorway services stations, particularly those along the M4 in Berkshire, are being warned that thieves could be using technology to prevent people locking their vehicles, and to then steal from them.

Thames Valley Police officers are warning people to make a manual check that doors are locked before leaving their vehicles.

Investigating officer, Sgt Alan Hawkett of Newbury Police Station said: "I strongly recommend that any members of the public visiting motorway services stations anywhere in the country keep all valuable items in their possession when away from their vehicle."

Anyone with any information or dashcam footage relevant to these incidents is asked to call 101 using ref 409 27/11/2016 or email alan.hawkett@thamesvalley.pnn.police.uk



FAKE AMAZON EMAILS CLAIM YOU HAVE PLACED AN ORDER



Action Fraud has received several reports from victims who have been sent convincing looking emails claiming to be from Amazon. The spoofed emails from "service@amazon.co.uk" claim recipients have made an order online and mimic an automatic customer email notification.

The emails cleverly state that if recipients haven't authorised the transaction they can click on the help centre link to receive a full refund. The link leads to an authentic-looking website, which asks victims to confirm their name, address, and bank card information.

Amazon will never ask for personal information to be supplied by e-mail. To find more information go to this link.

<https://www.amazon.co.uk/gp/help/customer/display.html?nodeId=201489210>

To report a fraud or cyber crime, call us on 0300 123 2040.



CARL WOODS BUTCHERS LTD

Purveyors of High Quality Meats to the Retail and Catering Trade
BBQ and Spit Roast Specialists



Quality Local Produce at Competitive Prices

Friendly, family run Butchers established for over 30 years. We pride ourselves on quality produce and customer satisfaction.



"Like" and "Share" our page to receive 10% off your next order.

Save £'s when you buy our Freezer Packs.

Enjoy one of our tailored Meat Packs.

Wood Lane Sonning Common Reading Berks. RG4 9SL Tel/Fax: 0118 972 2228 or Tel/Fax: 01491 832141

Registered in England 461 8708 Registered Office: 74 Brookmead Drive Wokingham Gwent DK12 9SJ VAT Registration No: 812 2942 49 Director: Mr C. Wood

TOM FORT CHAIRING

The art of chairing a meeting successfully is an art which requires unusual gifts to master. I have never managed it myself, even though I've done it often enough – I know that I'm too impatient, too tyrannical, too dismissive of other people's views.

The successful chairman – I'm using the term in a non-gender specific sense – has to perform a tricky balancing act. He (or she) has to get the business done in the time allowed. There is nothing worse than a meeting that drags on until everyone is bored stiff; or – even worse – that has to be suspended with its work incomplete.

But he (or she) has to sustain the appearance – or illusion – that everyone is being allowed their say; that no one is being shut up prematurely. Every

committee or council or working party has its members who will, given the chance, bang on for Britain. They must be restrained, but in such a way as not arouse resentment.

The good chairman must be courteous to all – even in the face of discourtesy. It is a bad idea to yawn, sigh, groan loudly, drum one's fingers impatiently, or bang one's head on the table (all of which I fear I have been guilty of). But he or she must have firmness to go with the politeness, be even-handed, and keep an eye on the clock.

All of which is a prelude to my saying how I will miss Douglas Kedge's chairmanship of the parish council when he steps down this spring. In my view – and I am sure I am not alone – Douglas has been an exemplary chairman. He took over after a stormy period in the council's fortunes, during which he

displayed considerable courage and resolve.

It helps that he has a penetrating voice and a commanding presence. He is firm, but never bullies. He knows the standing orders inside out, keeps the meetings moving, gets the business done, and always has time for a friendly chat afterwards, however warm the disagreements may have been. He will be much missed. ●



COOK'S CORNER

By SANDY ONOFRIO

BAKED ITALIAN COD – serves 4

4 tablespoons seasoned breadcrumbs	1/2 teaspoon salt, or to taste
2 tablespoons grated Parmesan cheese	450g cod fillets
2 tablespoons grated Pecorino Romano cheese	50g butter, melted
1/4 teaspoon garlic granules	1 tablespoon chopped fresh parsley



Preheat oven to 200/Gas 6. Lightly grease a medium baking dish.

Mix together the breadcrumbs, parmesan cheese, pecorino cheese, garlic granules and salt.

Brush both sides of fish fillets with butter, and generously top with the breadcrumb mixture. Arrange cod in a single layer in the prepared baking dish, sprinkle with parsley.

Bake in preheated oven 10 to 15 minutes.

FISH GOUJONS WITH TARTARE SAUCE – serves 4

450g sole or plaice fillets, skinned	3 tbsp mayonnaise
3 tbsp plain flour	4 tsp Dijon mustard
1 large egg, beaten	1 midget gherkin, finely chopped
75 g fresh white breadcrumbs	1 tbsp bottled capers, drained and chopped
2 tbsp sesame seeds	2 tbsp chopped parsley
1 tbsp olive oil	3 tbsp lemon juice
salt and pepper	
3 tbsp crème fraîche	



Preheat the oven to 220°/Gas 7. Cut the fish fillets into strips about 6 x 2 cm

Season the flour and spread on a plate. Put the egg on another plate, and mix the breadcrumbs with the sesame seeds on a third plate. Coat the fish strips in the seasoned flour, then dip each strip into the egg and then coat all over with the crumbs.

Brush a baking sheet with olive oil and lay the fish strips on the sheet in one layer. Bake for 5 minutes. Turn the strips over and bake for a further 5 minutes or until crisp and golden.

To make the tartare dip stir all the ingredients together and spoon into 4 small bowls.

NATHAN COX PLASTERING

All aspects of plastering work undertaken

- Plastering
- Dry lining
- Flat Rendering
- Coving
- Pebble dashing
- Plaster & hole repair

Over 15 years experience

Tel: 0118 9723010

Email: NJCox.plastering@hotmail.com



LANGLEY ARB LTD ARBORICULTURE SERVICES

Experts in Commercial and Domestic Tree Surgery

Tree Reductions & Thinning | Hedge & Shrub Trimming
Arboriculture Consultations | Supply & Planting

Telephone 0800 0385434 • Mobile 07775 959579
Email: Enquiries@Langleyarb.com • www.Langleyarb.com

WHEELERS ELECTRICAL CONTRACTORS

DOMESTIC INDUSTRIAL COMMERCIAL

"call today for a free estimate"

01491 651356

www.wheelers-electrical.co.uk

Langley Arboriculture Ltd are an Environmentally, Friendly Company Specialising in Customer Service whilst Providing a Professional Approach to Modern Tree Surgery. All our Staff are Highly Skilled Tree experts who know and understand your Regional Habitat.

Proud members of
Checkatrade.com
Where reputation matters



Computer Problems?

PC misbehaving?

Fault diagnosis, Maintenance & Upgrades, Networking, Data Recovery, Virus Cleaning, Broadband, Telephone Cabling & Extensions, TV, Mobiles, Website Design, Development & Hosting, and much more. Home and Business Support. Windows and Mac.

01491 680036 or 07961 476664
mail@influentialcomputers.com
www.influentialcomputers.com
Robin, Henry and Angus Piercey

Influential Computers Ltd - A Family Run Business Since 1984

DOMESTIC, COMMERCIAL & INDUSTRIAL
ROOFING & EXTERIOR MAINTENANCE

ROOFING PROBLEMS?

- ♦ Free quotations
- ♦ Roof repairs & surveys
- ♦ Flat roofs – all types of long term systems
- ♦ Slate/tile work
- ♦ Dormer & Velux windows
- ♦ Upvc soffits & fascias
- ♦ Chimneystack works
- ♦ Insurance backed guarantees
- ♦ Lead works
- ♦ Re-roofs
- ♦ CHAS Registered



Bondright Roofing Services

Freephone: 0800 1692361 or Henley 01491 579659

www.bondrightroofing.co.uk admin@bondrightroofing.co.uk

Mercurial Systems Ltd.

Imagine Dry Carpet Cleaning

"no soggy carpets or wet dog smell in your home"

Have 3 PIECE SOFA CLEANED get One FREE Room cleaned of your choice + Free Stain Guard

We also clean...

Upholstery



Leather & Fabric with super fast drying

Hard Floors with Anti Slip Coating



Tiles inc Grout • Stone Karndean & Amtico

- Spills & spots - gone
 - Smells & odours - removed
 - Deep cleans & lifts carpet pile - like new
- FREE spot & stain remover with every clean

You can call us FREE on

0800 180 49 82

zero dry time
Dry Carpet & Upholstery Cleaners

ALL MAKES SERVICING

Caring for all your motoring needs for over 50 years!



- ✓ BOSCH Diagnostics
- ✓ Service & Repair
- ✓ Air Conditioning Service & Re-Gas
- ✓ ATA Highly Qualified Technicians
- ✓ Free Collection & Delivery
- ✓ Courtesy Cars Available

Sonning Common Vauxhall

0118 972 2021

Peppard Road, Sonning Common, Reading RG4 9SU

CUSTOMER EXCELLENCE WINNER

Service Open: Mon-Fri 8am - 6pm • Sat 8.30am - 12.30pm • Sun CLOSED

www.sonningcommonvauxhall.com



£10.00 OFF

your next MOT on production of this voucher



TEXTUREPLUS

Free Estimates

Interior & Exterior Decorating
Artexing & Coving / Solving Artex Problems
Floor & Wall Tiling / Wallpaper Hanging / Plastering
Kitchens / Bathrooms / Roof & Guttering Maintenance
Carpentry – Doors + Architraves + Skirting

COMPLETE HOME IMPROVEMENTS
(Quality Comes As Standard)

30 Years Experience / NHBC Awarded / PPL Insured

Insurance Work Undertaken

Tel: 0118 972 1442 or Mobile: 07880 542363

Based in Sonning Common

GIRL POWER

Female Electrician

Local – Honest – Reliable
please call Jess **07870 507749**
for all your electrical needs



PILATES ABC, HENLEY.

CLASSES: SONNING COMMON, HENLEY
& HURLEY. BEGINNERS WELCOME

07521 699265 alyth@pilatesabc.co.uk

www.pilatesabc.co.uk

A.B.

WALKER

THE FUNERAL PEOPLE

PERSONAL AND PROFESSIONAL SERVICE
FROM A FIFTH GENERATION FAMILY BUSINESS:
LATER LIFE PRE-PLANNING,
BESPOKE TRADITIONAL AND CONTEMPORARY FUNERALS,
MONUMENTAL MASONS AND BEREAVEMENT CARE

www.abwalker.co.uk

HENLEY 01491 413434

CAVERSHAM 0118 9477007

READING 0118 957 3650



Golden Charter
Funeral Plans

FANCY A BIT OF A CYCLING TRIP OVER THE SUMMER DEAR?



By **CHRISTINE ATKINSON**

When Geoff changed career and trained as a teacher, his wife and kids thought it would be lovely to see more of him in the summer holidays. But Geoff had a dream. . . .

He had always wanted to cycle from Land's End to John O'Groats and the long summer holidays were perfect for it.

The planning started last year and the family headed off to the start point in Cornwall straight after school broke up in July. The route is over 870 miles and the whole journey took nearly 5 weeks of the summer holidays. Geoff, Caroline and the kids (Ainsley 9 and Bronwyn 6) camped every night except 2, spending the days exploring the area they were travelling in. Ainsley had decided that he would like to cycle some of the route with his dad, and ended up doing a little bit more than they first thought!

Ainsley's epic adventure saw him cycle an average of 15 miles a day for around 19 of the 22 days that the route took. He rode part of the day as Geoff needed to cover more miles per day than that, and ended up cycling 256 miles altogether – nearly a third of the way.

The three days that Ainsley didn't join in the cycle were on roads that were too busy, and Geoff also had a couple of rest days on the way. On the first day of cycling Caroline and the children walked down to Tintern Abbey from their campsite and visited some waterfalls. During one of the break days for Geoff the whole family climbed Scafell in the Lake District (highest peak in England at 978m –

not much of a break!), and on another day climbed Ben Nevis (at 1,344m the highest peak in the UK). Quite an achievement for a 9 and 6 year old!

When asked if the cycling got any easier Ainsley said 'a bit easier, but the really hard days were when it rained and I got soaked'. Early on in the trip whilst in Devon and Somerset the phone signal was lost, and therefore the route map, they got a little lost, and ran out of snacks! – which all

parents know is a very bad situation...

Ainsley's favourite place was Ben Nevis, although he enjoyed the first camp site which had a rope swing, and loved cycling round Arran with its beautiful coast, mountains and Lochranza Castle.

All in all a great achievement for the whole family, making memories for life, but especially for Ainsley and his 'epic' adventure. Well done Ainsley! ●



Church news

ONE OF A GROUP OF REMARKABLE PEOPLE

By ROSEMARY HOUSE

She's small, Irish and is packed with enthusiasm for the cause she has championed for 12 years. Mabel Boyd runs the Churches in Reading Drop in Centre (CIRDIC) with efficiency and passion and the support of over 100 volunteers. And this along with overseeing a further women's drop-in centre at the Wesley church in Queen's Road.

Five times a week on Monday, Tuesday, Friday, Saturday and Sunday the doors open to provide breakfast, a hot two/three course lunch, drinks and quiet time to between 40 to 60 people. These are either sleeping rough on the streets, dependent on drugs or alcohol or just plain lonely and in need of social interaction.

Mabel tells us not all organisations will take in people using drugs or alcohol. But this one, originally set up 26 years ago by a group of Christians from a number of churches in Reading, welcomes all those in need of care and food. There is however zero tolerance of disruption and aggression. The emphasis is on peace and quiet social activity. "With the whole ethos of the organisation rooted in Christianity", they care for the sick, needy and those shunned by society also aiming to bring them closer to God through prayer and discussion. Mosaic artwork made by guests decorate the walls of the centre to serve as a reminder of kindness shown to them.

Care isn't limited to food and drink. The guests, mostly men, can have a shower and are given fresh underwear and clothes before they leave. Mabel says: "We take the feeling of a clean skin for granted. It's a real blessing to feel clean again when you've been wearing the same clothes for ages." There is also medical help on hand in the form of two visiting nurses and a mental health nurse. Other support includes provision of a safe postal address, use of a telephone and provision of identity confirmation. Volunteers may also help guests use the computer or develop other skills like reading and writing and form-filling.

Financial help and support is given by Reading Borough Council and Communicare. CIRDIC works closely with St Mungo's who help the homeless on the street, and Launchpad, who assist with rehousing and getting people back on their feet. They have practical help from many big companies, most of whom prefer to remain anonymous, who will come in and clean and paint the premises, facilitated by Connect Reading.

Mabel cites Costco as having been "amazing" with their donations and they deliver food straight to the centre.

With CIRDIC's running costs at £70,000 per annum there is always a need for extra money to fund repairs, rent, insurance, heating, lighting and other equipment. 2015's organised Sleepout in November, where a large number of the volunteers and their friends slept out on the street, raised enough funds to provide a new roof and a new floor for the toilets. There are more fund raising events on the cards for 2017 for new showers and maintenance, but the centre relies on extra help from the community in the form of money and donations.

MABEL TALKS ABOUT THE FOLLOWING BEING PARTICULARLY IN DEMAND:

- men's pants (medium)
- razors,
- deodorant

- men's jeans
- women's sanitary items
- and ... money

being some of the most useful contributions.

And it has positive outcomes. A successful life back on track is quoted in their leaflet as follows: "...the Drop in was my first step in the recovery I have been enabled to have...in being led to the life I have today. I have taken many steps that I could not have managed on my own, and the first one was accepting the food, warmth, shelter and guidance that was offered to me at CIRDIC". ●

If you feel you could contribute the items above, could put in some hours or you'd like further information and insight into this valuable project please visit www.cirdic.org.uk



WOMEN'S WORLD DAY OF PRAYER 2017

This will be held on Friday, 3rd March, at 10.30 a.m. (Regular attendees please note change of time) at the Church of St. John the Baptist, Kidmore End, Reading, RG4 9AW. The country composing the service for next year is The Philippines and the theme is "Am I being unfair to you?". The service lasts for about an hour and will be followed by light refreshments. All local denominations are involved and everyone is welcome, not just women! We look forward to seeing you there. For further information ring Jane Starkey on 0118 9722741.



LENT LUNCHESES



Lent lunches at Christ the King Hall were so popular last year they will be repeated. Things are still at the planning stage but the format is expected to be the same: three separate bread and soup lunches in the weeks running up to Easter Sunday, 16 April, with a guest speaker each time, from the charity to be supported on that day.

Keep an eye open for posters on the public notice boards for detailed information from early March.

Sue Nickson
0118 972 4520

DIARY DATES

FEBRUARY

Wednesday 1 - 10:30
Walking football - every
Wednesday. For details contact
Andy Tidswell on 07710 875728.
Bishopswood Sports Ground

Wednesday 1 - 10:30 - 12:00
Village Coffee Morning hosted
by Sonning Common Women's
Institute. Open to all. Raising
funds for local community
projects. Village Hall

Sunday 5 - 09:30 - 10:30
Under 5s football - every
Sunday. For details contact
Andy Tidswell on 07710 875728.
Bishopswood Sports Ground

Tuesday 7 - 13:45
Whist afternoons - every
Tuesday. Batten House, Lea
Road

Wednesday 8 - 19:45
Henley Philatelic Society -
Quiz evening and Annual
Competitions. Bix Village Hall

Monday 13 - 14:30
FISH - Tea party. Village Hall

Thursday 16 - 11:30
FISH - Pub lunch

Thursday 16 - 19:30
Sonning Common Women's
Institute - "Hedgehogs - why
we should worry and what
can we do", a talk by Hugh
Warwick. Visitors welcome.
Village Hall

Monday 20 - 20:00
Sonning Common Parish
Council

Wednesday 22
Henley Philatelic Society -
Auction viewing. Bix Village
Hall

Thursday 23 - 09:00
FISH - Henley Farmers' Market

Monday 27 - 10:30 - 12:00
Sonning Common Business
Collaboration network group.
Butchers Arms, Blounts Court
Road

MARCH

Wednesday 1 - 10:30 - 12:00
Village Coffee Morning hosted
by Sonning Common Women's
Institute. Open to all. Raising
funds for local community
projects. Village Hall

Friday 3 - 10:30
Women's World Day of Prayer.
Church of St. John the Baptist,
Kidmore End

Wednesday 8 - 18:30
Henley Philatelic Society - Open
Auction. Bix Village Hall

Monday 13 - 14:30
FISH - Tea party. Village Hall

Thursday 16 - 11:30
FISH - Pub lunch

Thursday 16 - 19:30
Sonning Common Women's
Institute - AGM. Village Hall

Friday 17 - 19:30
Annual Village Quiz. Sonning
Common Primary School

Monday 20 - 20:00
Sonning Common Parish
Council. Village Hall

Wednesday 22 - 19:45
Henley Philatelic Society -
Displays. Bix Village Hall

Thursday 23 - 09:00
FISH - Henley Farmers' Market

Thu 30 - Sat 1 - 20:00
Chiltern Players - "Duets".
Peppard Memorial Hall

ADVERTISERS DIRECTORY

A B Walker & Sons Ltd Funeral Directors	30	Moore's Painting & Nathan Cox Plastering	8
AMAXS Plumbing Heating Electrical	14	Paul's Painting & Decorating	29
Barrs Insurance Services	Back	Peppard Building Supplies	26
Barn Store (Secure Self Store)	22	Pet Country Supplies	8
Beacon Flooring	8	Pilates ABC	22
Beville Estate Agency	2	Property Maintenance	30
Bondright Roofing Services	29	Red Kite Electrical	22
Bonner Locksmiths	12	Robin James Opticians	9
Brambles Floral Service	9	S J Hinton Carpenter & Joiner	9
Bridges Property	15	Sonning Common Beauty	35
Carl Woods Butchers Ltd	27	Sonning Common Garage	35
Carpet Fitter	2	Sonning Common Pet Care	30
Caversham Aerial Services	2	Sonning Common Pre-School	12
Compass Water Softeners	12	Sonning Common Spruce Property Maintenance Service	2
Computer Repairs	22	Studio One (Pilates, Matwork & Yoga)	14
Curtains, Blinds, Pelmetts,	14	T C Fuller Plumbing & Heating	8
Davis Tate Estate Agency	8	Tai Chi Classes	12
DK Builders	12	Tandoori Connoisseur	Back
E H Hamley & Son (Builders & Decorators)	12	Tereena Hartin Personal Trainer	35
Elements Kitchen Design	2	TexturePlus (Interior & Exterior Decorating)	Back
Family Hairdressing	12	The Little Web Company	30
Family Mediation	26	Time 4 Pilates	35
Functional Physio	Back	Tomalin and Son Funeral Directors	9
Girl Power (Electrician)	30	TradeMark (Windows, Doors, Conservatories)	26
Graham Blake Soft Furnishings	14	TV Aerial Services	12
Gunning Plumbing	9	Village Barbers	9
Heights Tree Care	14	Wee-Cot Seating	26
Henley Glazing & Window Centre Ltd	35	Wood Lane Dentistry	2
Influential Computers	26	Wheeler's Electrical Contractors	29
Jefferies Accountancy Services Ltd	26	Zero Dry Time (Dry Carpet Cleaning)	29
Kennylands Gymnastics	14		
Kidbys	9		
Kidmore End Pre-School	22		
Langley Arb (Tree Surgery)	29		
Mike Farina Auto Services Ltd	Back		
Milo Technical Support (Computers)	35		

The FISH Volunteer Centre runs regular door-to-door shopping trips to Tesco in Henley every Monday morning and to Henley Waitrose, Henley Farmers Market, Morrisons in Reading and Reading Town Centre every month.

The programme of shopping and leisure trips for each month is published and distributed on 20th of the preceding month and bookings are taken from that date. Copies of the programme are available the FISH Volunteer Centre, Sonning Common Library, the Christian Community Action shop, Pet Country Supplies and on request from Carson's Chemist. The monthly programme of trips is posted on noticeboards in both Peppard and Sonning Common.

Details of all minibus trips can also be found on the FISH website www.fishvolunteercentre.co.uk

For more information and to book any trip call **0118 972 3986** any weekday between 09.30 and 11.30 a.m. •

Computer Problems?

Free quote, no fix no fee, no call out charge

Over 200 happy customers in
Sonning Common.

Milo and Michael Harper



Milo Technical Support
0118 972 4905 **22 Sedgewell Road**

THE LITTLE WEB COMPANY



We produce small but perfectly
formed brand and web packages
for startups and small businesses.

Call Kevin on: **07887 902 376**
Email: hello@thelittlewebcompany.com
www.thelittlewebcompany.com

CONTACT US
TODAY ABOUT OUR
PACKAGES

HENLEY GLAZING AND WINDOW CENTRE LIMITED

Glass Supply, Glazing Service

Mirrors, Shelves, Table Tops

Sealed Units, Lead Lights

Locks, Secondary Glazing

Shower Screens

01491 629901



FENSA
Registered Company

Suppliers & Installers of:

UPVC, Aluminium and

Timber Windows

Doors and Conservatories

Facias, Sofits and Guttering

Workshop: Unit 12, Manor Farm, Peppard Common, Henley on Thames RG9 5LA

Fax: 01491 629904 Email: andy@henleyglazingwindow.co.uk

TANDOORI

Connoisseur

*Come & Experience authentic
Tandoori & Bengali Cuisine*

21 Wood Lane
Sonning Common
0118 972 3104 / 972 1054

- ★ Fully Air-Conditioned
- ★ Large Groups Catered For
- ★ Open 7 Days a Week

TAKE-AWAY MENU
We Guarantee Prompt Service on All Orders

S J HINTON

Carpenter & Joiner

Wide range of high-quality carpentry
services delivered by skilled craftsman

Built-In Wardrobes, Cupboards, Shelving.
Kitchen Fitting, Doors, Floors, Windows,
Stairs, Roof Construction.

Telephone Steve on 0118 972 3602
or 07887 653866

Sonning Common Beauty

12 Newfield Road Telephone 0118 972 3059
www.sonningcommonbeauty.co.uk

- MANICURE • PEDICURE • ORGANIC FACIALS
- MD FORMULATIONS GLYCOLIC PEELS
- WAXING • LASH AND BROW TREATMENTS
- SPRAY TANNING • MAKE-UP • MASSAGE
- BRIDAL HOLIDAY AND MUM-TO-BE PACKAGES AVAILABLE

Gift Vouchers Available
Some reduced price treatments available each
week please ring to check availability



Sonning Common Health Centre
Wood Lane, Sonning Common,
Reading, RG4 9SW

- Back & Neck pain
- Muscle / Joint Strains
- Ligament Sprain
- Sports Injuries
- Whiplash Injuries
- Shoulder Injuries
- Post-Operative Rehabilitation
- Pre / Post Natal Exercise
- Respiratory Conditions
- Lower Limb & Foot Problems

- Appointments available every day
- Pilates classes throughout the week

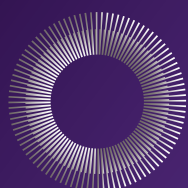
Jo Pereira MCSP
Catherine Matthews MCSP
Chartered Physiotherapists

T: 01189 722 745

E: info@functionalphysio.co.uk

www.functionalphysio.co.uk

The team at Functional Physio are Chartered Physiotherapists registered with the Health Professions Council and are recognised by all major insurance companies, including Bupa and Axa PPP.



Tereena Hartin

PERSONAL TRAINER

For information on personal training, lifestyle and nutrition advice, please contact Tereena:

T: 07702 296210

E: tereena.hartin@yahoo.co.uk

Mike



Autoservices Ltd.
Tel: 01189 724036

...Competitive Prices

...Excellent Service

Servicing and Repairs on any make

Tyres ♦ Batteries ♦ Exhausts

MOT ♦ Car Sales

**Mike Farina Auto Services Ltd,
21 Sedgewell Road, Sonning Common,
Reading, RG4 9TA**

Your Long Established Local Garage

0118 972 4036



Find us on:
facebook®

T&S

**Tomalin & Son
Funeral Directors**

**Henley-on-Thames family run
Independent Funeral Service**



**Golden Charter
Funeral Plans**

£40 John Lewis voucher or
£40 donation to Sue Ryder Care
with each pre-paid funeral plan taken out on production of this advert

Tel: (01491) 573370

www.tomalins.co.uk tomalin@btconnect.com
Anderson House, 38 Reading Road, Henley-on-Thames, RG9 1AG

Fed Up With Call Centres

Barrs Insurance

Mark & Helen Richards
Your Local Insurance Brokers
For The Unusual & The Usual
Let Us Take Care Of Your Insurance

- House & Contents • Business • Liabilities
- Travel • Landlords • Professional Indemnity
- Horse • Shops • Sickness / Accident
- Commercial / Unusual Vehicle

If It's Not listed We Still Can Help
All Types Of Insurance Enquiries Welcome

0118 924 2603

mail: info@barrs-insurances.co.uk

www.barrs-insurance.co.uk

Unit 2, Kidby's Yard, Kennylands Road, Sonning Common RG4 9JT
Authorised and Regulated by FCA



Tai Chi Classes



Do you need to improve your balance,
coordination or strength?

Want to improve your sense of wellbeing?

Gentle mind, body and spirit exercises
Ideal for all ages and any fitness level

Daytime, Evening and Weekends Classes

Contact Karen on 07867 954 786



www.karenpounds.co.uk

